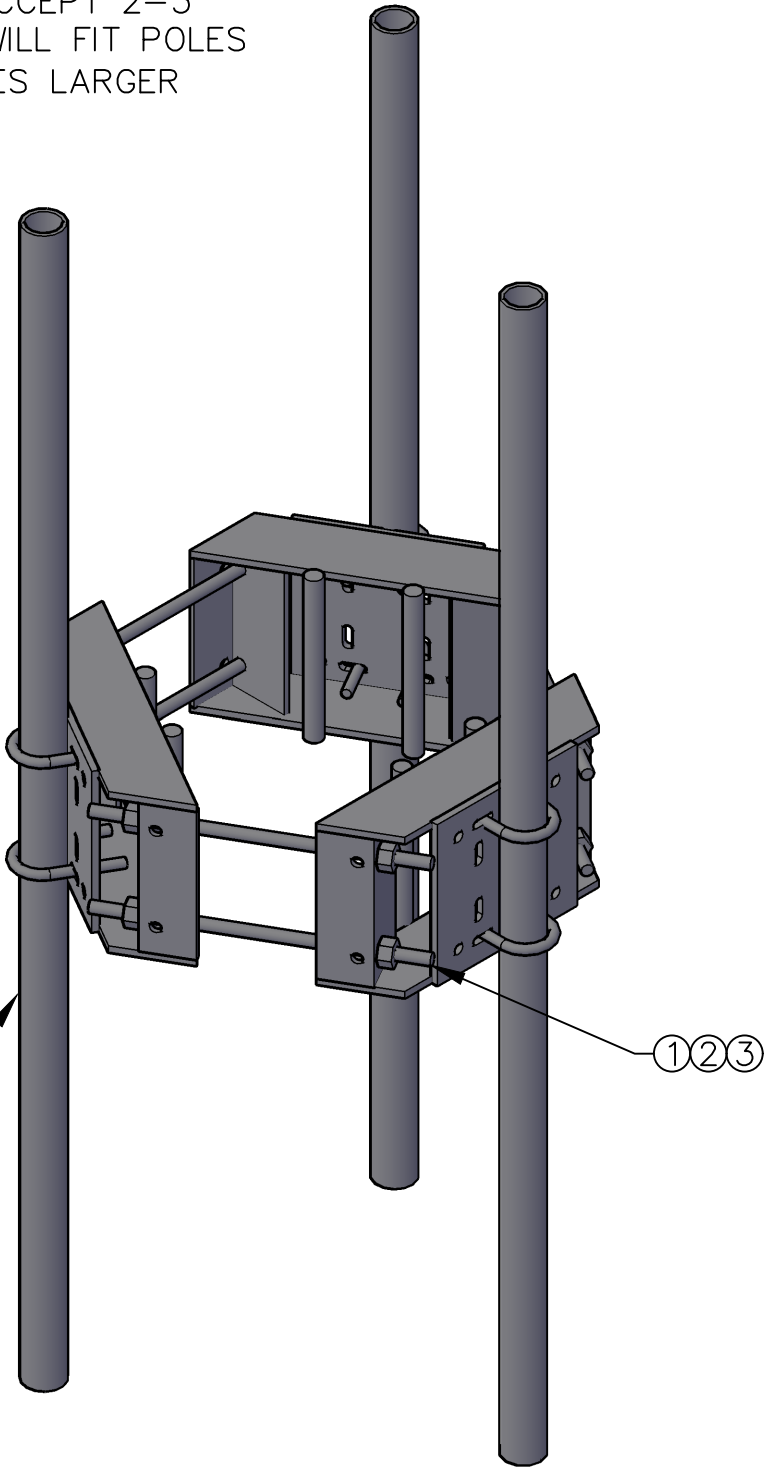
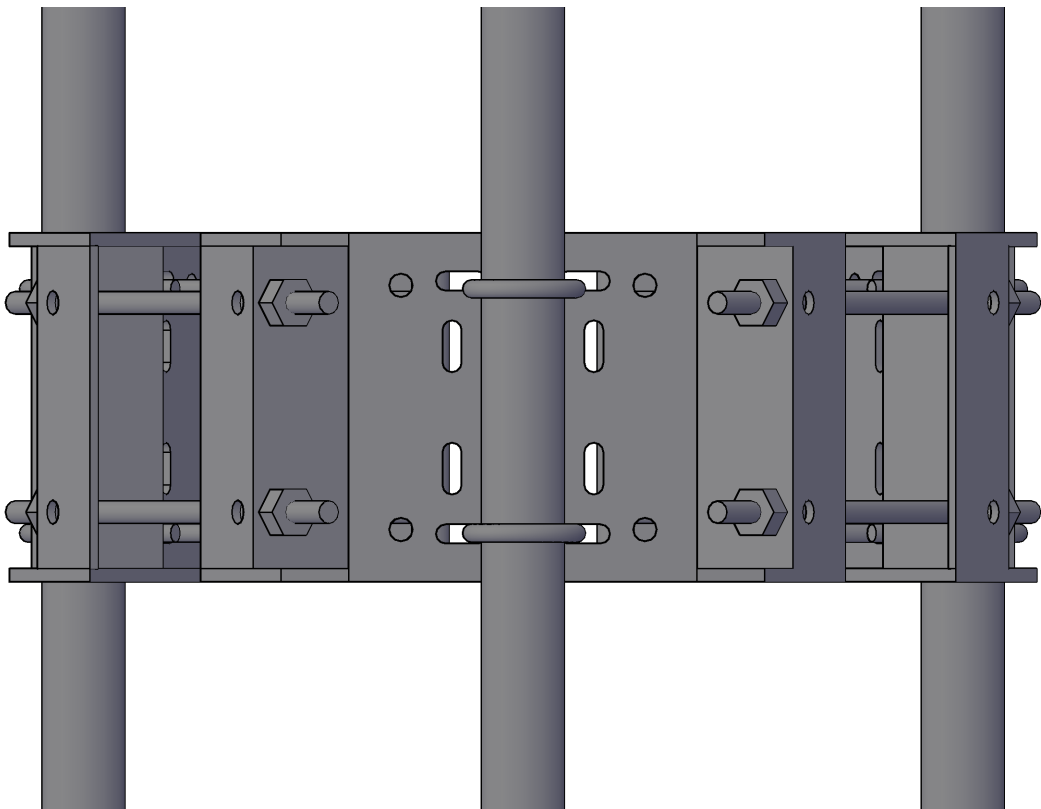


EASY TO USE LIGHTWEIGHT RING MOUNT. PERFECT FOR ADDING ADDITIONAL REMOTE RADIO HEADS OR ANTENNA SYSTEMS. FACE PLATE IS CONSTRUCTED TO ACCEPT 2-3" PIPE, BOTH VERTICALLY AND HORIZONTALLY. WILL FIT POLES 10-28". ADAPTOR KIT IS AVAILABLE FOR POLES LARGER THAN 28" AND UP TO 45" DIAMETER

ITEM	PART NUMBER	DESCRIPTION	QTY
1	HNG58	5/8" GALV NUT	12
2	HLG58	5/8" GALV LOCK	12
3	HTR581	5/8" GALV THREADED ROD 24"	6



PIPE AND U-BOLT  
NOT INCLUDED

	A	SHOP DRAWING	5-15-13	DATE	PART NO.	VCLDRM	DRAWN BY	L.DONNELLY
				SCALE	DESCRIPTION	10"-26" LIGHT RING MOUNT	SHEET	3 OF 4
				1:4				
				PROPRIETARY NOTE:				
				THIS DOCUMENT AND THE INFORMATION IT CONTAINS IS PROPRIETARY AND CONFIDENTIAL TO VANCOMM LLC. IT HAS BEEN PROVIDED ONLY FOR YOUR INTERNAL USE IN CONSIDERING A PURCHASE FROM VANCOMM LLC. NEITHER THIS DOCUMENT NOR ANY PORTION THEREOF MAY BE RELEASED OR DISCLOSED TO ANY THIRD PARTY WITHOUT PRIOR CONSENT FROM VANCOMM LLC. PLEASE DESTROY ALL COPIES OF THIS DOCUMENT IF YOU CANNOT ACCEPT THIS PROPRIETARY RESTRICTION. DOCUMENT COPYRIGHT© 2021, VANCOMM LLC.				
ZONE	REV	DESCRIPTION	DATE	APPROVED				
REVISIONS								



The Original Mount  
Build Not Destroy

2512 Route 73 North, Cinnaminson, NJ 08077