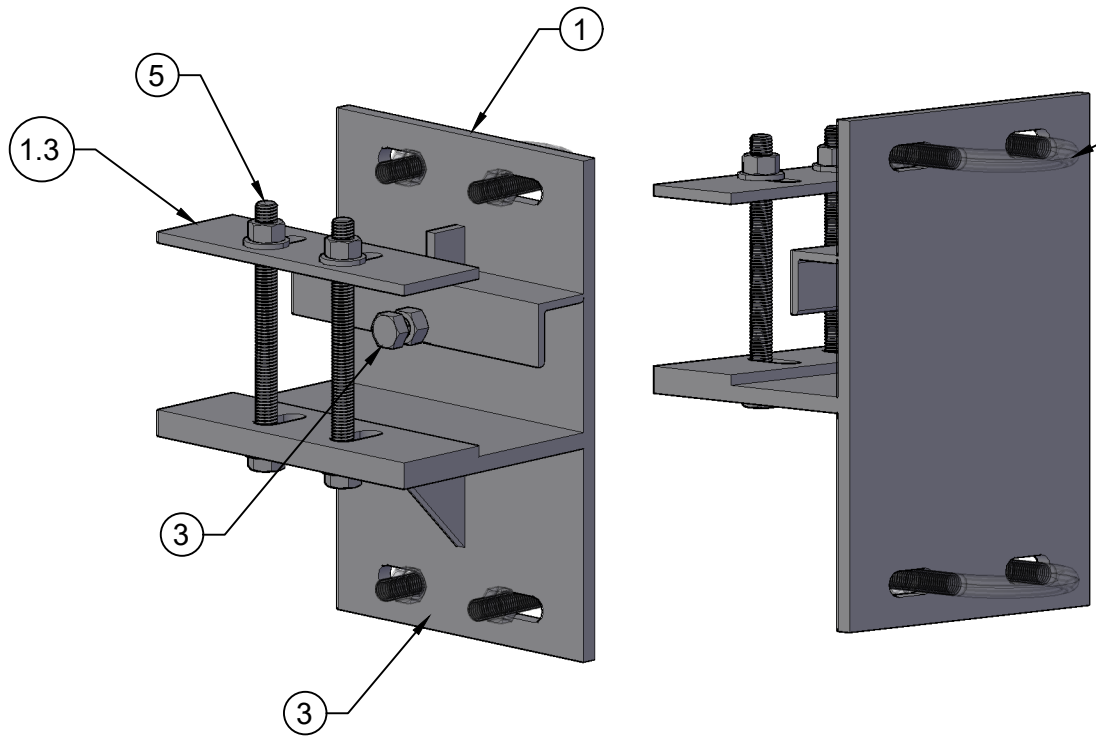
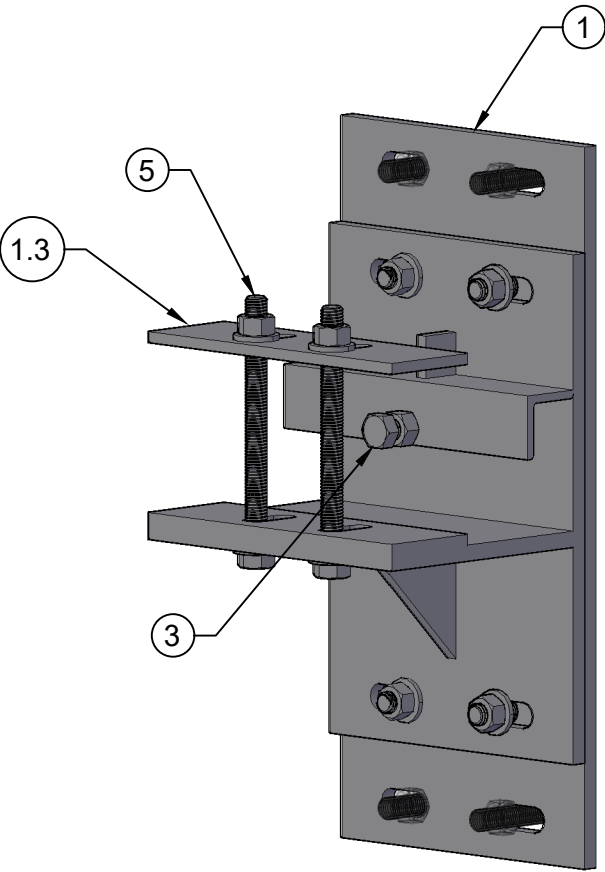
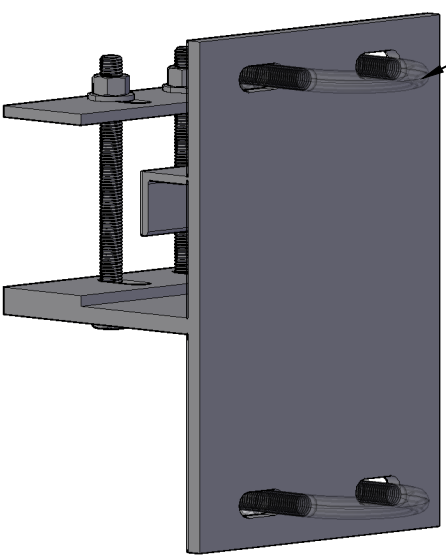


BILL OF MATERIALS			
ITEM	QTY	MATERIAL	WEIGHT
1	1	LMPM_LEGACY MONOPOLE PIPE MOUNT	19.93 LBS
1.3	1	LMPM_BACKER PLATE	1.52 LBS
2	1	LMPM_ADAPTOR PLATE	15.46 LBS
3	1	1/2"X1-3/4" BOLT ONLY	
4	4	1/2"X2" BOLT ASSEMBLY	
5	2	1/2"X6" FULL THREAD BOLT ASSEMBLY W/ DOUBLE FLAT WASHER	

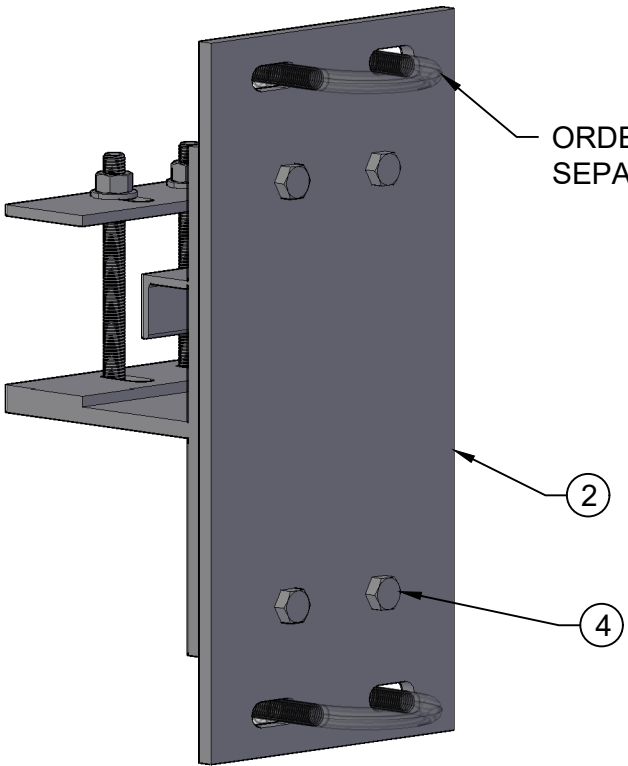
NOTE(S):  
1. ORDER U-BOLTS SEPARATELY. SPECIFY PIPE SIZE AT TIME OF ORDER. 2-1/2" OD TO 3-1/2" OD.




LEGACY MONOPOLE PIPE MOUNT  
ADAPTOR PLATE NOT SHOWN



LEGACY MONOPOLE PIPE MOUNT  
ADAPTOR PLATE SHOWN



					DATE 03/08/2022	PART NO. VCLMPM	DRAWN BY LD	 <b>The Original Mount</b> <b>Build Not Destroy</b> 2512 Route 73 North, Cinnaminson, NJ 08077
					SCALE 1:4	DESCRIPTION LEGACY MONOPOLE PIPE MOUNT	SHEET 1 OF 1	
					PROPRIETARY NOTE:			
					THIS DOCUMENT AND THE INFORMATION IT CONTAINS IS PROPRIETARY AND CONFIDENTIAL TO VANCOMM LLC. IT HAS BEEN PROVIDED ONLY FOR YOUR INTERNAL USE IN CONSIDERING A PURCHASE FROM VANCOMM LLC. NEITHER THIS DOCUMENT NOR ANY PORTION THEREOF MAY BE RELEASED OR DISCLOSED TO ANY THIRD PARTY WITHOUT PRIOR CONSENT FROM VANCOMM LLC. PLEASE DESTROY ALL COPIES OF THIS DOCUMENT IF YOU CANNOT ACCEPT THIS PROPRIETARY RESTRICTION. DOCUMENT COPYRIGHT© 2021, VANCOMM LLC.			
ZONE	REV	DESCRIPTION	DATE	APPROVED				
REVISIONS								